

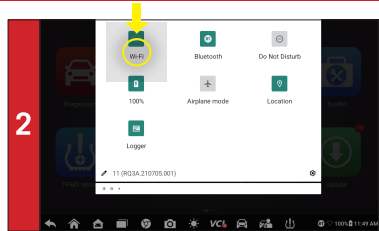
QUICKSTART GUIDE

This quickstart guide applies to the MaxiCheck® MX900, MaxiCOM® MK900, MaxiDAS® DS900, MaxiPRO® MP900, MaxiCOM® MK900-BT, MaxiDAS® DS900-BT, MaxiPRO® MP900-BT, MaxiCheck® MX900-TS, MaxiCOM® MK900-TS, MaxiDAS® DS900-TS, MaxiPRO® MP900-TS, and MaxiTPMS® TS900. Ensure your Wi-Fi network is accessible and has a stable connection.

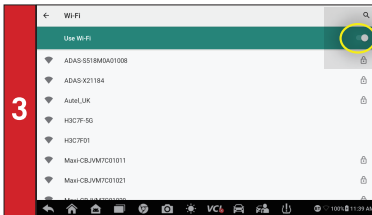
CONNECTING TO WI-FI



- 1 Tap on the lower-right corner of the screen. The Quick Settings menu will appear.



- 2 A larger menu with additional options, including Wi-Fi, will appear.
- Long press the **Wi-Fi** icon to adjust the Wi-Fi settings.

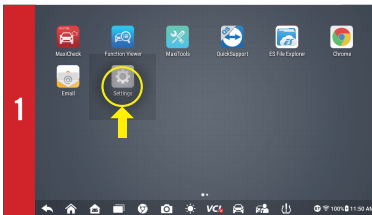


- 3
- Make sure **Wi-Fi** is turned on.
 - Select your local network.
 - Enter your network password to connect the Wi-Fi.



- 4 The Wi-Fi icon will appear when a connection is established.

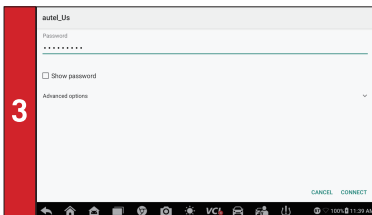
Android



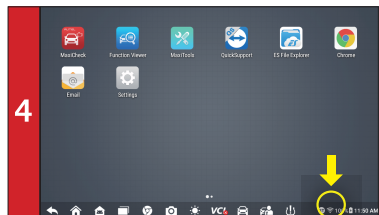
- 1 From the Android Home screen, select **Settings**.



- 2
- Make sure **Wi-Fi** is turned on.
 - Select your local network.



- 3 Enter your network password to connect the Wi-Fi.

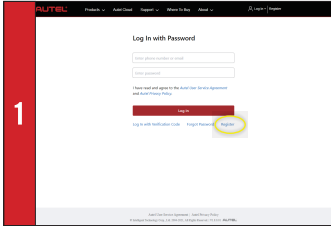


- 4 Ensure you are connected to Wi-Fi: The Wi-Fi icon will appear in the lower-right corner.

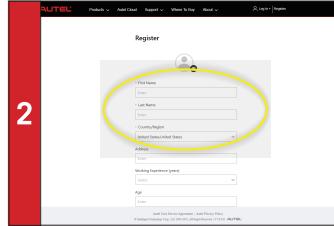
QUICKSTART GUIDE

This quickstart guide applies to the MaxiCheck® MX900, MaxiCOM® MK900, MaxiDAS® DS900, MaxiPRO® MP900, MaxiCOM® MK900-BT, MaxiDAS® DS900-BT, MaxiPRO® MP900-BT, MaxiCheck® MX900-TS, MaxiCOM® MK900-TS, MaxiDAS® DS900-TS, MaxiPRO® MP900-TS, and MaxiTPMS® TS900. Ensure your Wi-Fi network is accessible and has a stable connection.

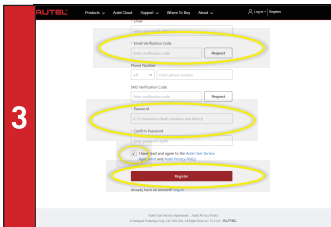
TOOL REGISTRATION VIA PC



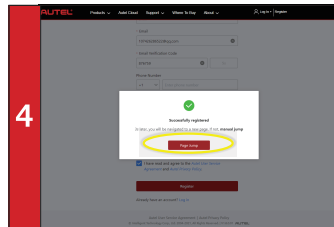
- 1
- Visit <https://pro.autel.com>.
 - Click **Register** to create your Autel ID.
 - If you already have an Autel ID, log in and skip to Step 5.



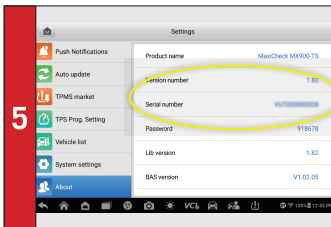
- 2
- Enter your personal information. Fields marked with an asterisk (*) are mandatory.



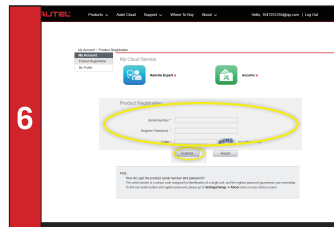
- 3
- Enter your email address, then click **Request**.
 - You will receive an email from Autel with your verification code. Open the email and copy the code into the proper input box.
 - Set a password for your account, and enter the password again to confirm.
 - Read the **Autel User Service Agreement** and **Autel Privacy Policy**, then check the box to accept the terms.
 - After all the information is entered, click **Register**.



- 4
- Once your account is successfully registered, you will be redirected to the Product Registration screen. If not, click the button on the screen.



- 5
- Your product serial number and password are required to complete your registration. To find your serial number and password on the tablet: go to **Settings > About**.



- 6
- Enter your tablet serial number and password.
 - Enter the CAPTCHA code as shown.
 - Click **Submit** to complete your product registration.

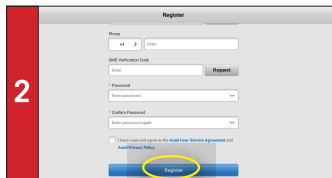
QUICKSTART GUIDE

This quickstart guide applies to the MaxiCheck® MX900, MaxiCOM® MK900, MaxiDAS® DS900, MaxiPRO® MP900, MaxiCOM® MK900-BT, MaxiDAS® DS900-BT, MaxiPRO® MP900-BT, MaxiCheck® MX900-TS, MaxiCOM® MK900-TS, MaxiDAS® DS900-TS, MaxiPRO® MP900-TS, and MaxiTPMS® TS900. Ensure your Wi-Fi network is accessible and has a stable connection.

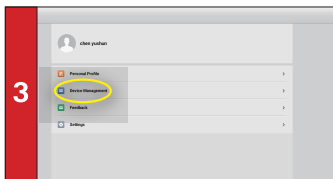
TOOL REGISTRATION VIA TABLET



- 1 Tap **Autel User Center** on the Job Menu.
- If you do not have an Autel account, tap **Register** on the Log-in screen.
- *The Register screen will appear.*
- If you already have an Autel ID, log in and skip to step 3.



- 2 Enter your personal information. Fields marked with an asterisk (*) are required.
- Input the verification code sent to your email address, then set and confirm your password.
- Read the **Autel User Service Agreement** and **Autel Privacy Policy**, then check the box to accept the terms.
- After all the information is entered, tap **Register**.



- 3 Once your account is successfully registered, you will enter the main menu of the Autel User Center.
- Select **Device Management** on the main menu.
- *The Device Management screen will appear.*



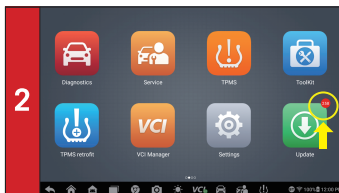
- 4 Tap the **Link Device** button on the upper-right corner of the Device Management screen.
- *The serial number and password of the device will automatically appear on the Link Device screen.*
- Tap the **Link** button to complete the product registration.

DOWNLOAD SOFTWARE UPDATES

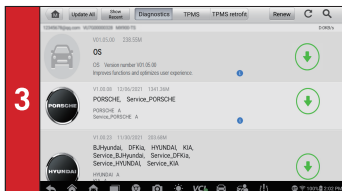
Software updates are available for FREE for the first year from date of purchase. Your tool must be registered as per the directions on Page 1 to download software updates. We recommend you update one app at a time. Selecting update all will take more time.



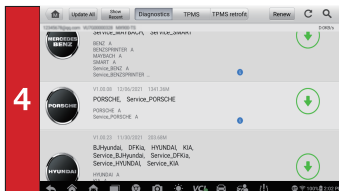
- 1 Connect your tablet to Wi-Fi and plug it into a power source.



- 2 If updates are available, the number of available updates will appear as a badge on the green **Update** button.
- Select the **Update** button to view a list of available updates.



- 3 Download the system update by tapping the **Update** icon on the right.



- 4 Download any available updates for each vehicle manufacturer you service.

QUICKSTART GUIDE

This quickstart guide applies to the MaxiCheck® MX900, MaxiCOM® MK900, MaxiDAS® DS900, MaxiPRO® MP900, MaxiCOM® MK900-BT, MaxiDAS® DS900-BT, MaxiPRO® MP900-BT, MaxiCheck® MX900-TS, MaxiCOM® MK900-TS, MaxiDAS® DS900-TS, MaxiPRO® MP900-TS, and MaxiTPMS® TS900. Ensure your Wi-Fi network is accessible and has a stable connection.

1 YEAR-TCP

TOTAL CARE PROGRAM

PURCHASE TO EXTEND TABLET WARRANTY & SOFTWARE

SUBSCRIPTION COVERAGE FOR ONE YEAR

DON'T WAIT FOR INITIAL YEAR EXPIRATION

PURCHASE & ACTIVATE A NEW TCP SUBSCRIPTION BEFORE UPDATES EXPIRE TO LIMIT DOWN TIME AND ENSURE CONTINUED VEHICLE COVERAGE

NEW SAME DAY ORDER & ACTIVATION
GET YOUR SUBSCRIPTION FASTER
RECEIVE ACTIVATION CODES VIA EMAIL
ASK YOUR LOCAL TOOL DEALER

REGISTER YOUR TABLET AT
PRO.AUTEL.COM & PURCHASE TCP

USE ACTIVATION CODE ON CARD OR
DIGITAL CODE PROVIDED IN EMAIL

REDEEM CODE TO ACTIVATE
SUBSCRIPTION & WARRANTY

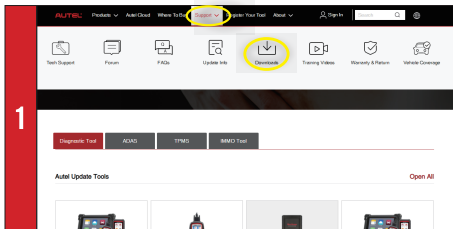


YouTube
TRAINING VIDEOS
@AutelTools

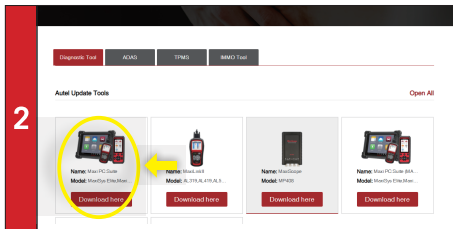


View More Autel Videos at: <https://www.youtube.com/auteltools>

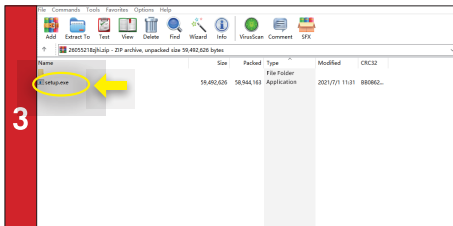
PRINT VIA PC



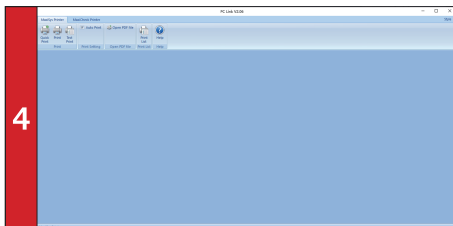
- Make sure your Windows PC and tablet are on the same Wi-Fi network.
- On your computer, go to www.autel.com, select **Support > Downloads > Autel Update Tools**.



- Locate the **Maxi PC Suite** software and click on the **Download Here** button.
- Open the .zip file.



- Double click the **setup.exe** to install the program.

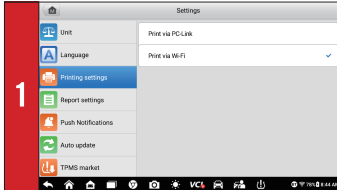


- Run **PC Link** on the computer. This was installed along with the installation of the **Maxi PC Suite** software.
- Select **MaxiSys Printer**. Tap **Quick Print** or **Print** to start printing.

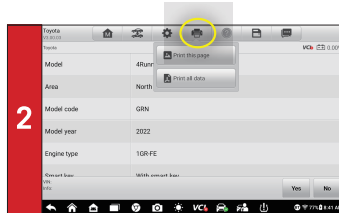
QUICKSTART GUIDE

This quickstart guide applies to the MaxiCheck® MX900, MaxiCOM® MK900, MaxiDAS® DS900, MaxiPRO® MP900, MaxiCOM® MK900-BT, MaxiDAS® DS900-BT, MaxiPRO® MP900-BT, MaxiCheck® MX900-TS, MaxiCOM® MK900-TS, MaxiDAS® DS900-TS, MaxiPRO® MP900-TS, and MaxiTPMS® TS900. Ensure your Wi-Fi network is accessible and has a stable connection.

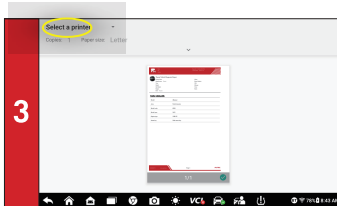
PRINT VIA WI-FI



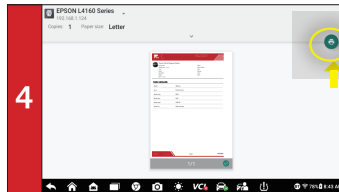
- 1 On your tablet, tap **Settings > Print Settings > Print via Wi-Fi**.



- 2 Select the file you want to print and tap the **Print** button on the top toolbar of the tablet.



- 3 Tap **Select a printer** on the top-left corner of the screen. The device will automatically scan for available printers.

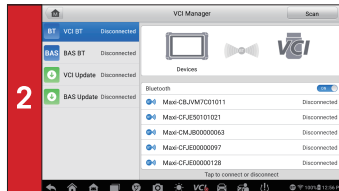


- 4 Select a printer and start printing.

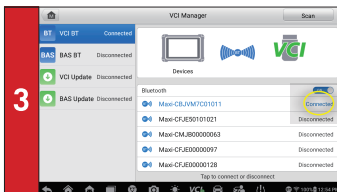
VCI CONNECTION VIA BLUETOOTH



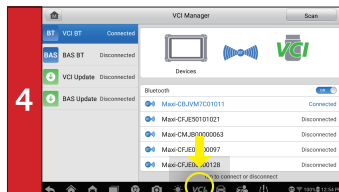
- 1 Select the **VCI Manager** application from the Main Menu or from the bottom toolbar.



- 2 Choose **VCI BT** from the left side of the screen. Your tablet will automatically start scanning for available VCI devices. Found devices are listed on the right side of the screen.



- 3 When a connection is established, the status of the connected device will read, "Connected."



- 4 When the VCI is ready for use, a green badge will appear on the VCI button at the bottom of the screen.

QUICKSTART GUIDE

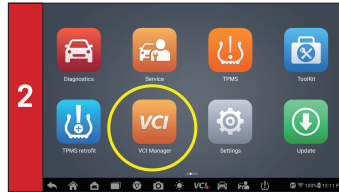
This quickstart guide applies to the MaxiCheck® MX900, MaxiCOM® MK900, MaxiDAS® DS900, MaxiPRO® MP900, MaxiCOM® MK900-BT, MaxiDAS® DS900-BT, MaxiPRO® MP900-BT, MaxiCheck® MX900-TS, MaxiCOM® MK900-TS, MaxiDAS® DS900-TS, MaxiPRO® MP900-TS, and MaxiTPMS® TS900. Ensure your Wi-Fi network is accessible and has a stable connection.

VCI SOFTWARE UPDATE



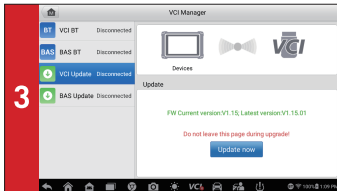
- 1

 - Connect the VCI to the tablet via Bluetooth.
 - Connect the VCI to a power source to ensure update is installed correctly. Ensure the Internet connection is stable during update.



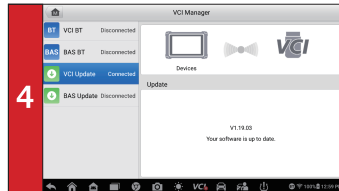
- 2

 - Select the **VCI Manager** application from the Main Menu.



- 3

 - Select **VCI Update** from the Connection Mode list on the left side of the screen.
 - The current and latest version of the VCI software will appear.
 - If available, tap the **Update Now** button to download any software updates.



- 4

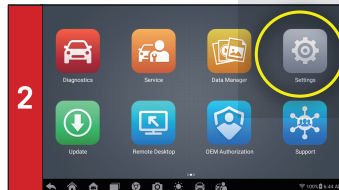
 - The VCI update is now completed.

VCI FIRMWARE UPGRADE



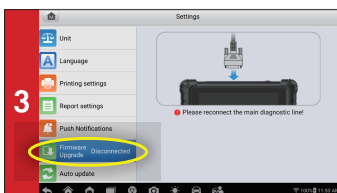
- 1

 - Connect the main cable to the diagnostics tablet and the test vehicle respectively.



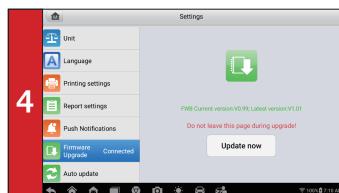
- 2

 - Select **Settings** from the Main Menu.



- 3

 - Select **Firmware Upgrade** from the left side of the screen.



- 4

 - The current and latest version of the VCI firmware will appear.
 - If available, tap the **Update Now** button to download any firmware updates.

NOTE: Reconnect the main cable after the update is completed.

QUICKSTART GUIDE

This quickstart guide applies to the MaxiCheck® MX900, MaxiCOM® MK900, MaxiDAS® DS900, MaxiPRO® MP900, MaxiCOM® MK900-BT, MaxiDAS® DS900-BT, MaxiPRO® MP900-BT, MaxiCheck® MX900-TS, MaxiCOM® MK900-TS, MaxiDAS® DS900-TS, MaxiPRO® MP900-TS, and MaxiTPMS® TS900. Ensure your Wi-Fi network is accessible and has a stable connection.

VID – VEHICLE IDENTIFICATION DETECTION AUTO VIN DETECT (COMPATIBLE WITH VEHICLES 2007 AND NEWER)



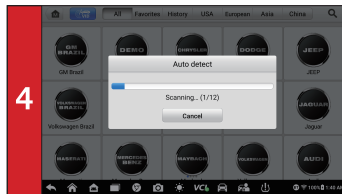
- 1 • Select **Diagnostics** from the Main Menu.



- 2 • Select the blue **VID** button on the top-left of the screen.

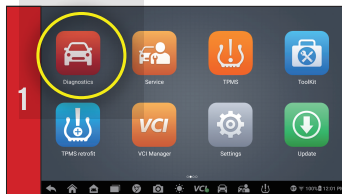


- 3 • Select **Auto Detect** from the drop-down menu.



- 4 - Once the vehicle is successfully identified, the **Diagnostics Menu** will appear.

AUTO-SCAN



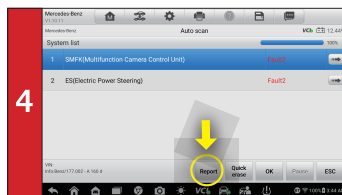
- 1 • Select **Diagnostics** from the Main Menu.



- 2 • Select the vehicle manufacturer.
• Select **Automatic Selection**.



- 3 • Select **Read** to acquire VIN automatically or type in the VIN manually.



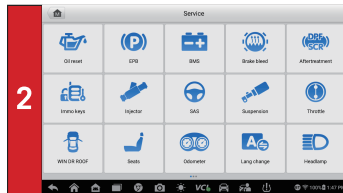
- 4 - A **System List** of all faults will appear after the Auto Scan.
- Diagnostic Trouble Codes (DTCs) can be viewed by selecting **Report** at the bottom.
 - Fault I #: Indicates faults are present; “#” indicates the number of detected faults.
 - Pass I No Fault: Indicates the system was scanned and no fault was detected.
 - -: Indicates the system was unresponsive.

QUICKSTART GUIDE

This quickstart guide applies to the MaxiCheck® MX900, MaxiCOM® MK900, MaxiDAS® DS900, MaxiPRO® MP900, MaxiCOM® MK900-BT, MaxiDAS® DS900-BT, MaxiPRO® MP900-BT, MaxiCheck® MX900-TS, MaxiCOM® MK900-TS, MaxiDAS® DS900-TS, MaxiPRO® MP900-TS, and MaxiTPMS® TS900. Ensure your Wi-Fi network is accessible and has a stable connection.

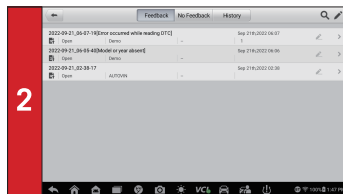
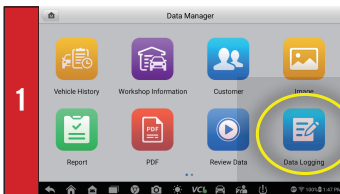
SUITE APPS

SERVICE



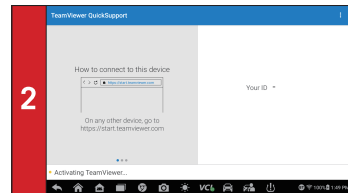
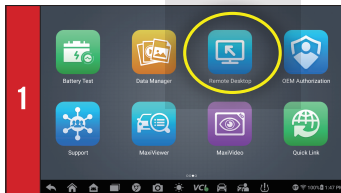
- Designed to provide quick access to the vehicle systems for various service and maintenance tasks.

DATA LOGGING



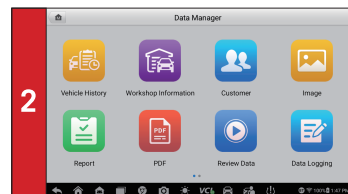
- Interactive recording sessions save vehicle testing data and enable direct contact with Autel technical support staff for first-hand troubleshooting of diagnostic bugs and errors.

REMOTE DESKTOP



- Enables you to authorize our tech-support specialists to remotely log into the tablet to solve your problems.

DATA MANAGER



- Designed to store all data files, including customer information, vehicle ID, and vehicle diagnostic records.